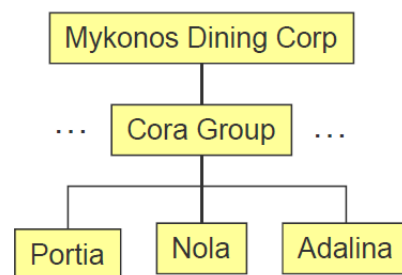


Mykonos Dining Corp. and Cora Group

Business Modeling

Mykonos Dining Corp. is a company which acquired Cora Group, a company which owns several restaurants in Washington DC.

- Cora's flagship restaurant is Portia which has the mission of cooking meals fresh.
- Nola is another restaurant of Cora Group that just opened.
- A third restaurant in the Cora Group is Adalina, a fairly new restaurant with only eight tables.



Process Modeling

Please model the following process for serving the guests in the Portia restaurant using BPMN:

- As soon as the guests arrive, they are welcomed by the receptionist and seated.
- The server takes the order.
- The drinks are served by the server.
- The meals are prepared by the cooking service and served by the server.
- If the meal is finished, the server prints and presents the bill and then makes the payment.

Organisation Modeling

Model the organisation structure:

- The Portia restaurant has four units: Procurement, Diner Services, Cooking Services and Cleaning Services.
- There are four roles in the Diner Service: Receptionist, Server and Bar keeper. In the kitchen there are the Cook and the Cook's Assistant.
- The head of Procurement is Jackie Strodder.

Data and Document Modeling

Model the data for the process of serving guests and reference it from the BPMN model:

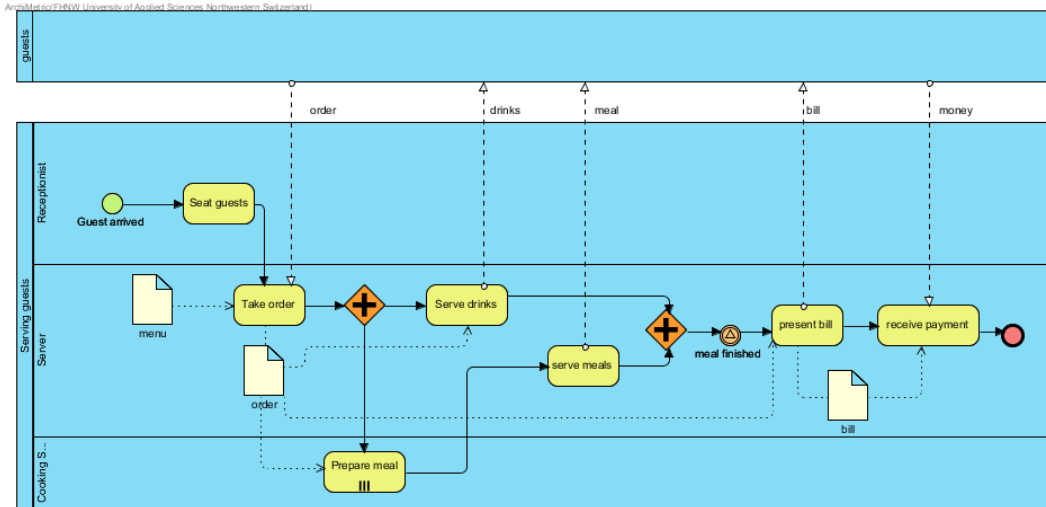
- To place their orders the guest can read a menu. The menu is a document. There are four menus:
 - A dinner menu
 - A lunch menu
 - A wine list
- The bill is a document which is presented by a server. The bill has a table number and an amount.
- The order consists of several meals and drinks. Meals are starters, main courses or deserts. There is at least one meal and at least one drink. The order is taken by a server and assigned to a table.

Products

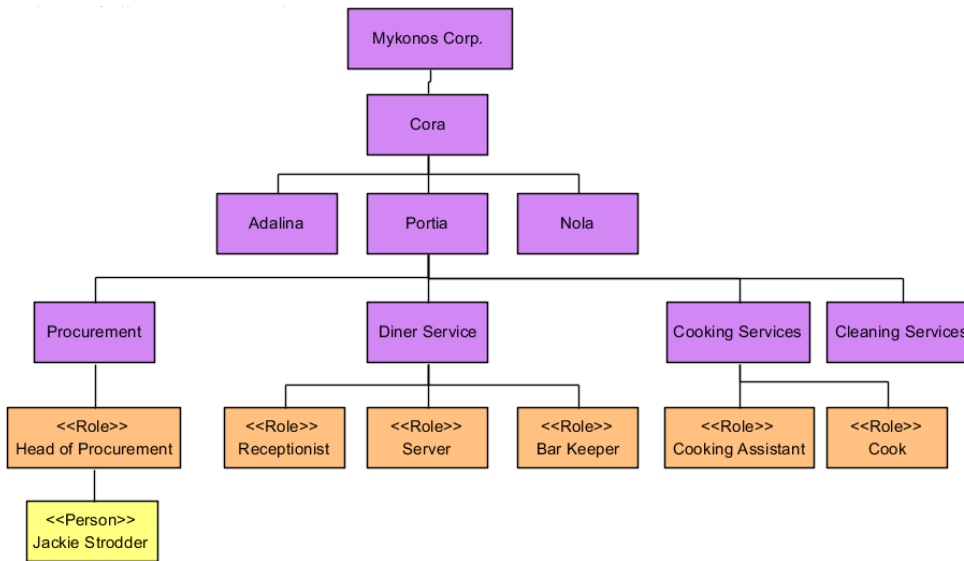
- Meals are starters, main courses or deserts.

Solutions

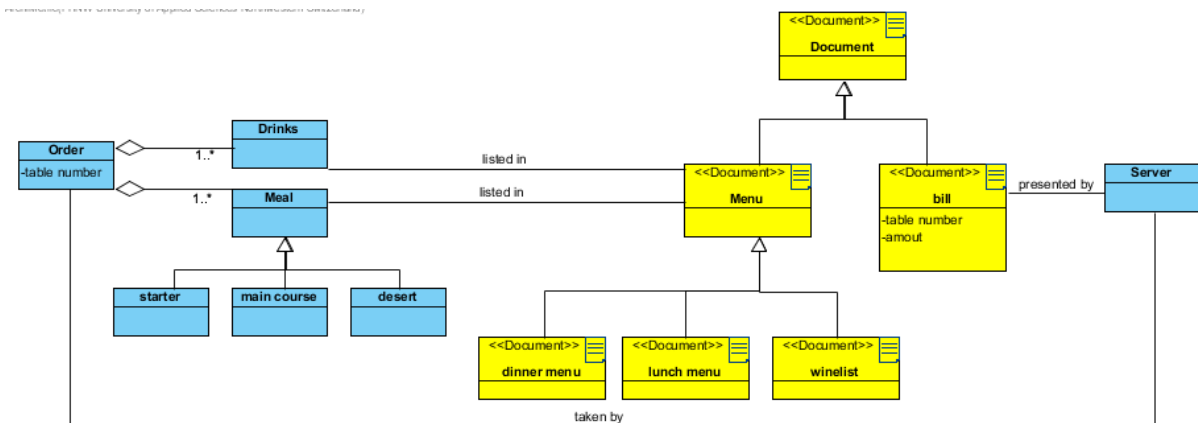
Business Process Diagram



Organisation Model

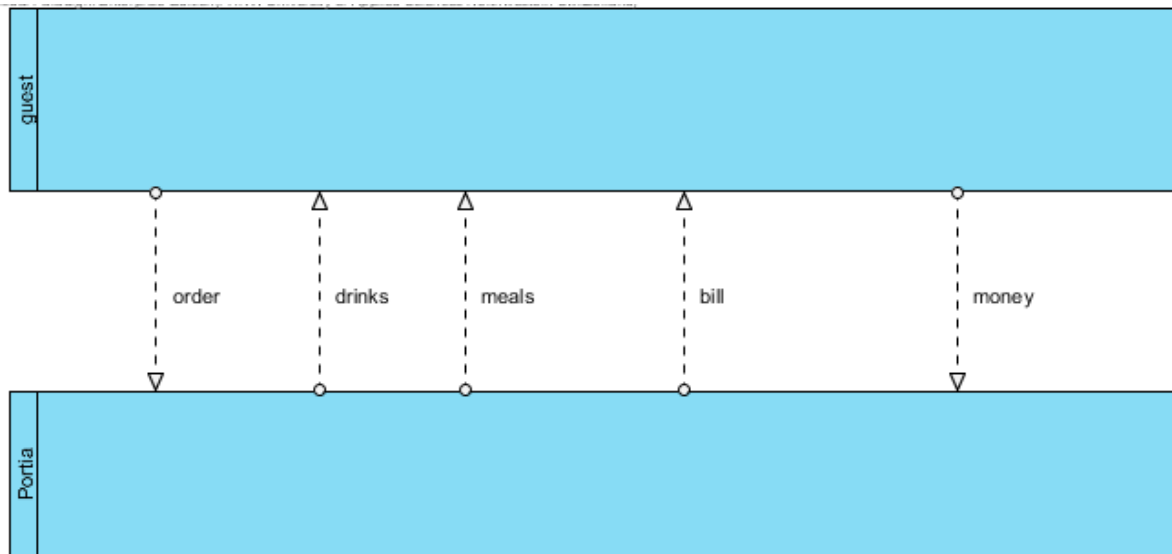


Data Model



Additional: Interactions

Collaboration Model



Choreography Model

