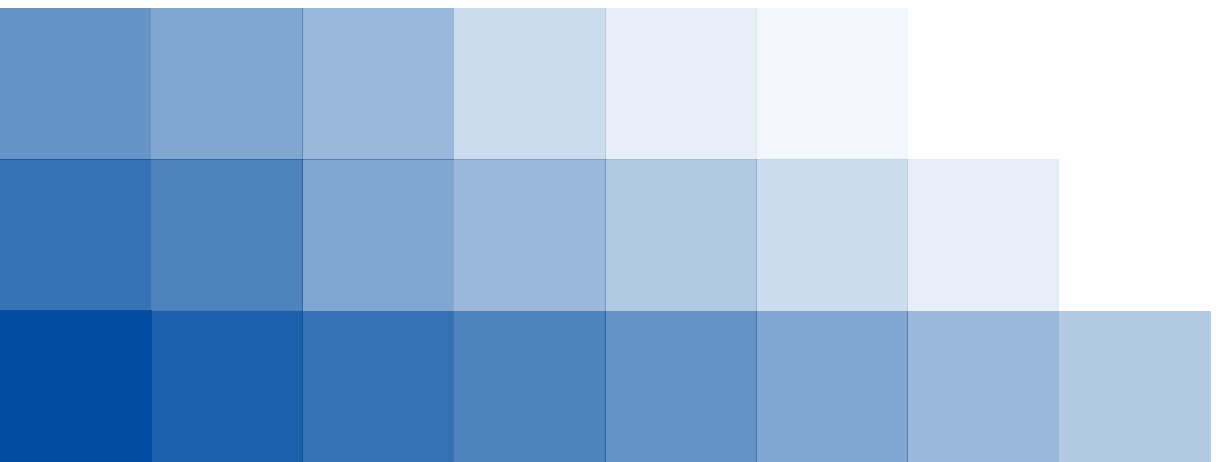
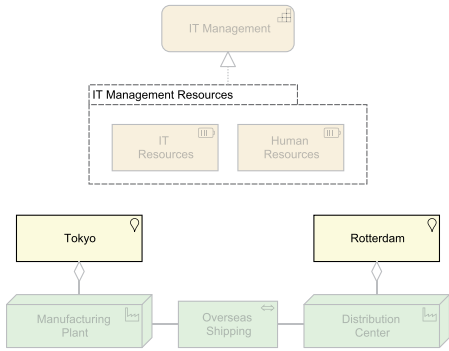


ArchiMate 3.0

Concepts



Composite Elements



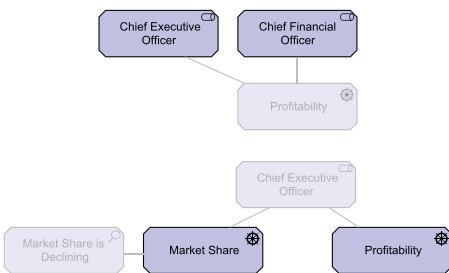
Grouping

Grouping *IT Management Resources* is composed of the resources *IT Resources* and *Human Resources*, and realizes the capability *IT Management*.

Location

Tokyo and *Rotterdam* are the locations of facilities *Manufacturing Plant* and *Distribution Center*.

Motivation Elements



Stakeholder

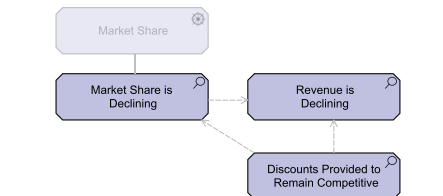
Stakeholders *Chief Executive Officer* and *Chief Financial Officer* share a common driver *Profitability*.

Driver

Market Share and *Profitability* are drivers for the stakeholder *Chief Executive Officer*.

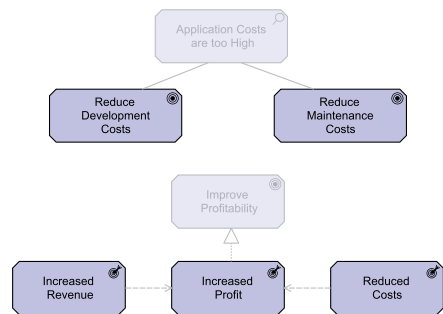
Assessment

Market Share is Declining, *Revenue is Declining*, and *Discounts Provided to Remain Competitive* are assessments of driver *Market Share*.



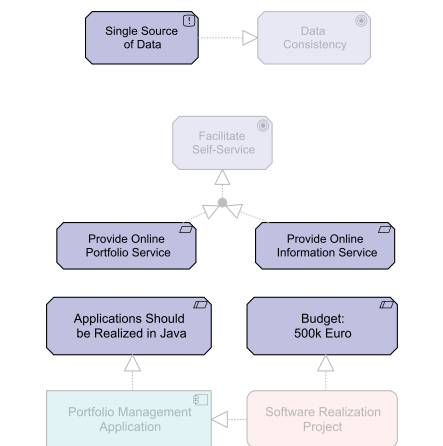
Goal

Reduce Development Costs and *Reduce Maintenance Costs* are goals to address the assessment *Application Costs are too High*.



Outcome

Increased Revenue, *Increased Profit*, and *Reduced Costs* are the intended outcomes of goal *Improve Profitability*.



Principle

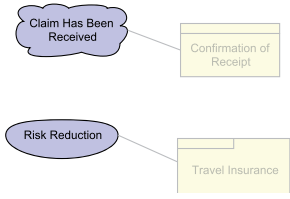
Principle *Single Source of Data* serves as a means to achieve goal *Data Consistency*.

Requirement

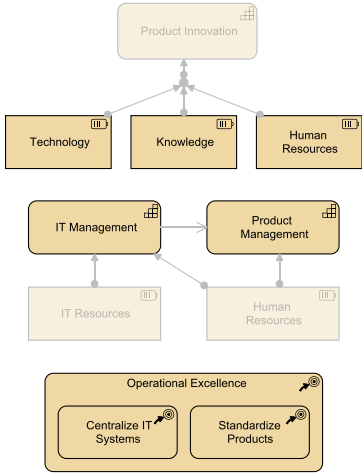
Goal *Facilitate Self-Service* can be realized by requirements *Provide Online Portfolio Service* and *Provide Online Information Service*.

Constraint

Applications Should be Realized in Java and *Budget 500k Euro* are constraints for the realization of the *Portfolio Management Application*.

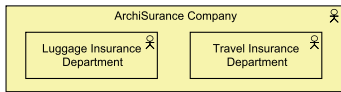


Strategy Elements



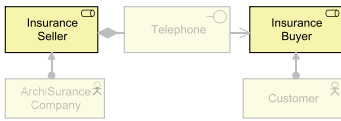
Business Layer

ACTIVE STRUCTURE ELEMENTS



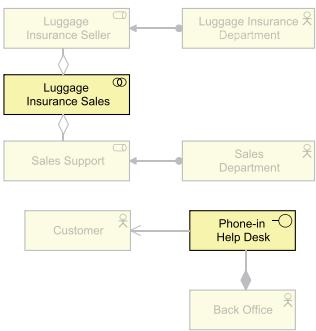
Business Actor

ArchiSurance Company consists of actors *Luggage Insurance Department* and *Travel Insurance Department*.



Business Role

Insurance Seller is carried out by actor *ArchiSurance Company*. *Insurance Buyer* is carried out by *Customer*.

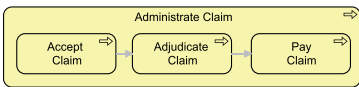


Business Collaboration

Luggage Insurance Seller and *Sales Support* together carry out *Luggage Insurance Sales*.

Business Interface

Actor *Customer* uses interface *Phone-in Help Desk*, which is delivered by actor *Back Office*.



Business Process

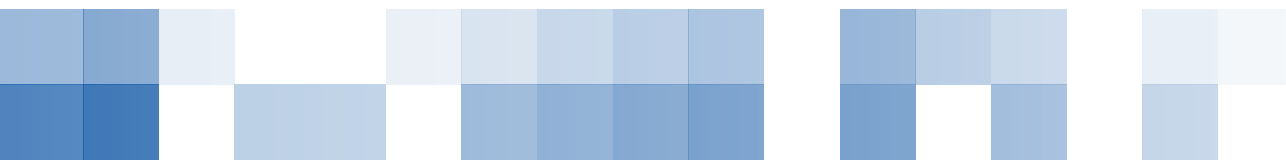
Administrate Claim consists of sub-processes *Accept Claim*, *Adjudicate Claim*, and *Pay Claim*.

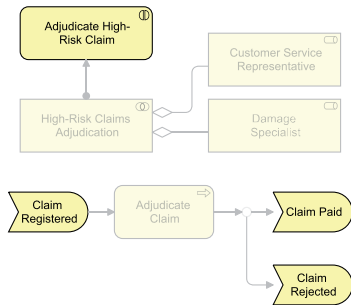


Business Function

Business function *Claim Acceptance* sends information to business function *Claim Handling*.

BEHAVIOR ELEMENTS



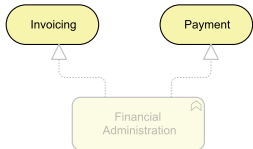


Business Interaction

Interaction *Adjudicate High-Risk Claim* is carried out as collaboration between *Customer Service Representative* and *Damage Specialist*.

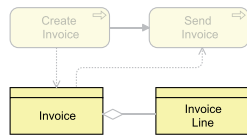
Business Event

Event *Claim Registered* triggers process *Adjudicate Claim*, which triggers *Claim Paid* or *Claim Rejected*.



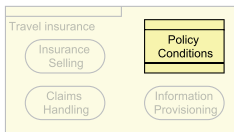
Business Service

Services *Invoicing* and *Payment* are realized by function *Financial Administration*.



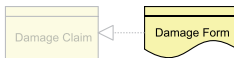
Business Object

Invoice aggregates *Invoice Line*. *Create Invoice* creates *Invoice*. *Invoice* has access to *Send Invoice*.



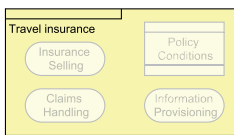
Contract

Contract *Policy Conditions* belongs to product *Travel Insurance*.



Representation

Object *Damage Claim* is realized (represented) by *Damage Form*.

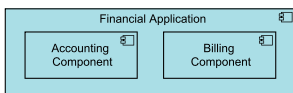


COMPOSITE ELEMENTS

Product

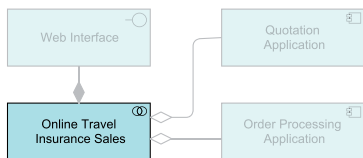
Product *Travel Insurance* consists of contract *Policy Conditions* and services *Insurance Selling*, *Claims Handling*, and *Information Provisioning*.

Application Layer



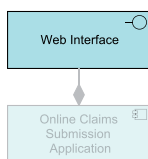
Application Component

Component *Financial application* consists of the sub-components *Accounting Component* and *Billing Component*.



Application Collaboration

Online Travel Insurance Sales is a collaboration of *Quotation Application* and *Order Processing Application*.

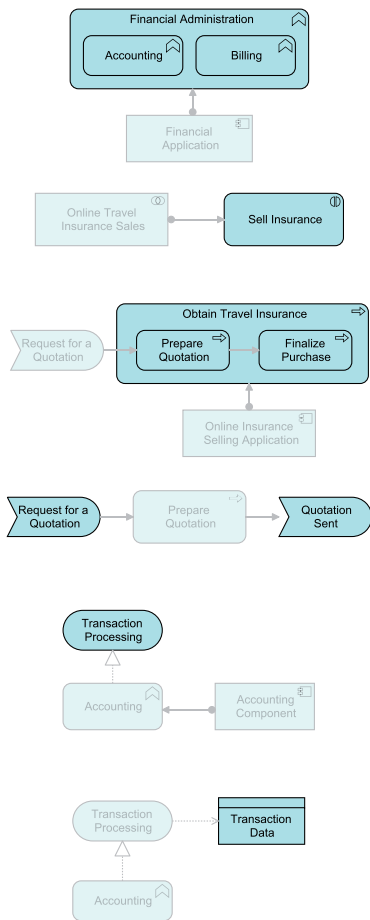


Application Interface

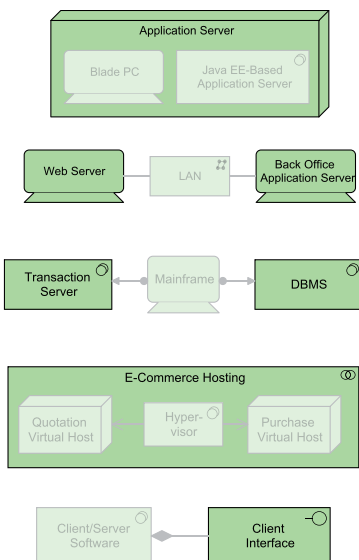
Component *Online Claims Submission Application* has an interface *Web Interface*.

ACTIVE STRUCTURE ELEMENTS

BEHAVIOR ELEMENTS



Technology Layer



Application Function

Function *Financial Administration* consists of sub-functions *Accounting* and *Billing*, and is carried out by component *Financial Application*.

Application Interaction

Interaction *Sell Insurance* is carried out by collaboration *Online Travel Insurance Sales*.

Application Process

Process *Obtain Travel Insurance* consists of sub-processes *Prepare Quotation* and *Finalize Purchase*, and is performed by component *Online Insurance Selling Application*.

Application Event

Event *Database Update* triggers process *Prepare Quotation*, which triggers *Quotation Sent*.

Application Service

Service *Transaction Processing* is realized by function *Accounting*.

PASSIVE STRUCTURE ELEMENTS

Data Object

Object *Transaction Data* is exchanged within service *Transaction Processing*.

ACTIVE STRUCTURE ELEMENTS

Node

Node *Application Server* consists of device *Blade PC* and system software *Java EE-Based Application Server*

Device

Devices *Web Server* and *Back Office Application Server* are connected via communication network *LAN*.

System Software

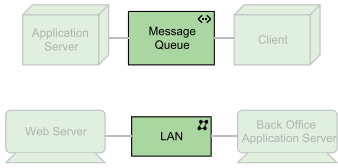
Device *Mainframe* deploys system software *Transaction Server* and *DBMS*.

Technology Collaboration

E-Commerce Hosting is a collaboration between system software *Hypervisor* and nodes *Quotation Virtual Host* and *Purchase Virtual Host*.

Technology Interface

Client Interface is part of the *Client/Server Software*.



Path

Message Queue is a path between nodes *Application Server* and *Client*.

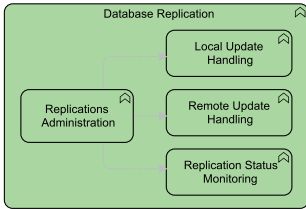
Communication Network

Communication network *LAN* connects devices *Web Server* and *Back Office Application Server*.

BEHAVIOR ELEMENTS

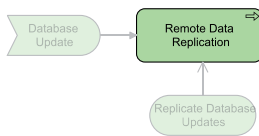
Technology Function

Database Replication consists of sub-functions *Replications Administration*, *Local Update Handling*, *Remote Update Handling*, and *Replication Status Monitoring*



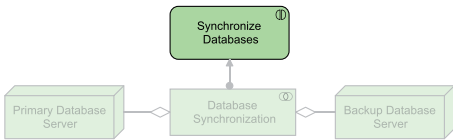
Technology Process

Process *Remote Data Replication* is triggered by event *Database Update* and served by service *Replicate Database Updates*.



Technology Interaction

Synchronize Databases is carried out as collaboration *Database Synchronization* between nodes *Primary Database Server* and *Backup Database Server*.



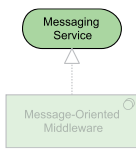
Technology Event

Event *Database Update* triggers process *Remote Data Replication*.



Technology Service

Messaging Service is realized by system software *Message-Oriented Middleware*.



PASSIVE STRUCTURE ELEMENTS



Artifact

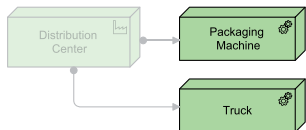
Risk Management EJB has assigned system software *Java EE-Based Application Server*

Physical Elements

ACTIVE STRUCTURE ELEMENTS

Equipment

Packaging Machine and *Truck* have assigned facility *Distribution Center*.



Facility

Manufacturing Plant is assigned to equipment *Assembly Line*.

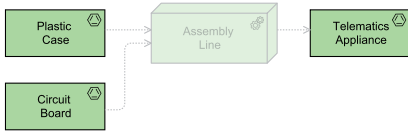


Distribution Network

Overseas Shipping connects facilities *Manufacturing Plant* and *Distribution Center*.



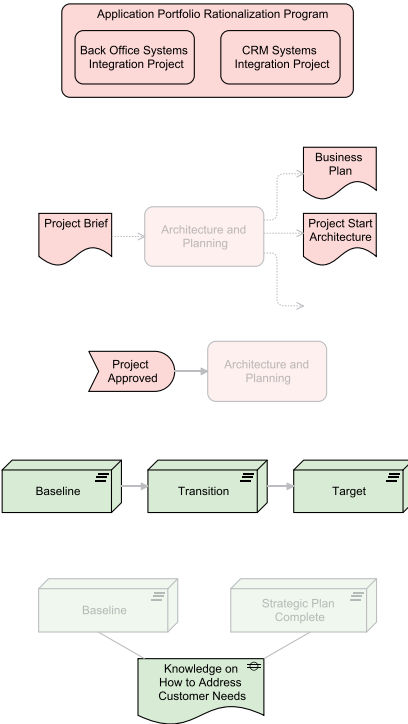
PASSIVE STRUCTURE ELEMENTS



Material

Assembly Line makes use of materials Plastic Case and Circuit Board to produce material Telematics Appliance.

Implementation and Migration Elements



Work Package

Back Office Systems Integration Project and CRM Systems Integration Project are part of the Application Portfolio Rationalization Program.

Deliverable

Deliverable Project Brief is accessed by work package Architecture and Planning, resulting in Business Plan, Project Start Architecture, and Roadmap.

Implementation Event

Event Project Approved triggers work package Architecture and Planning.

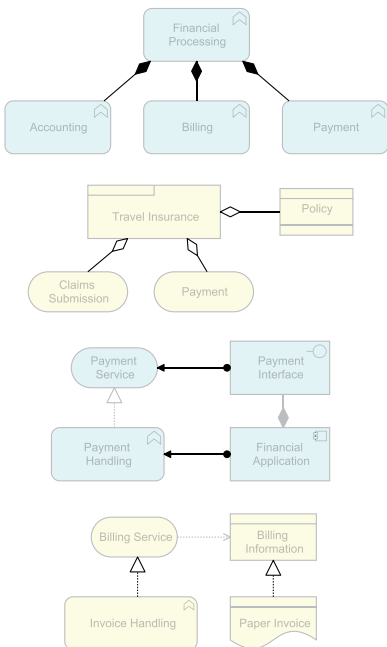
Plateau

Migration from the plateau Baseline to plateau Target with intermediate plateau Transition.

Gap

Gap Knowledge on How to Address Customer Needs shows the hiatus between the plateaus Baseline and Strategic Plan Complete.

Relationships



STRUCTURAL RELATIONSHIPS

Composition Relationship

Financial Processing is a composition of Accounting, Billing, and Payment.

Aggregation Relationship

Travel Insurance is an aggregation of Claim Submission, Payment, and Policy.

Assignment Relationship

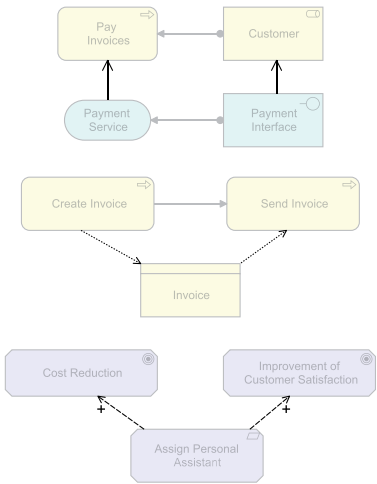
Payment Interface is assigned to Payment Service. Financial Application is assigned to Payment Handling.

Realization Relationship

Invoice Handling realizes Billing Service. Paper Invoice realizes Billing Information.



DEPENDENCY RELATIONSHIPS



Serving Relationship

Payment Service serves Pay Invoices. Payment Interface serves Customer.

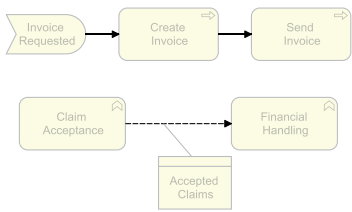
Access Relationship

Create Invoice accesses Invoice, and Invoice accesses Send Invoice.

Influence Relationship

Assign Personal Assistant influences Cost Reduction and Improvement of Customer Satisfaction.

DYNAMIC RELATIONSHIPS



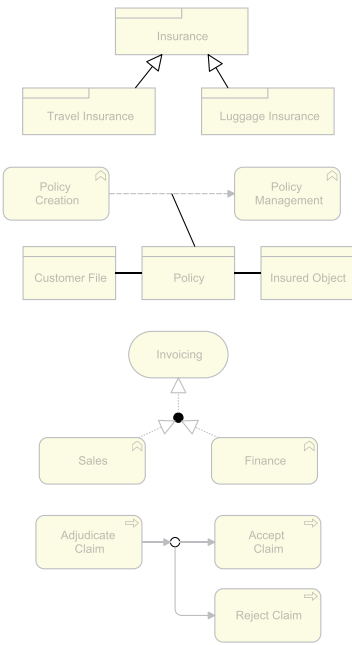
Triggering Relationship

Create Invoice triggers Send Invoice.

Flow Relationship

Flow Accepted Claims between business functions Claim Acceptance and Financial Handling.

OTHER RELATIONSHIPS



Specialization Relationship

Travel Insurance and Luggage Insurance are specializations of Insurance.

Association Relationship

Policy is associated with Customer File and Insured Object, and with the flow between Policy Creation and Policy Management.

Junction

Functions Sales and Finance collectively realize service Invoicing.

OR Junction

After Adjudicate Claim, either Accept Claim or Reject Claim is triggered.