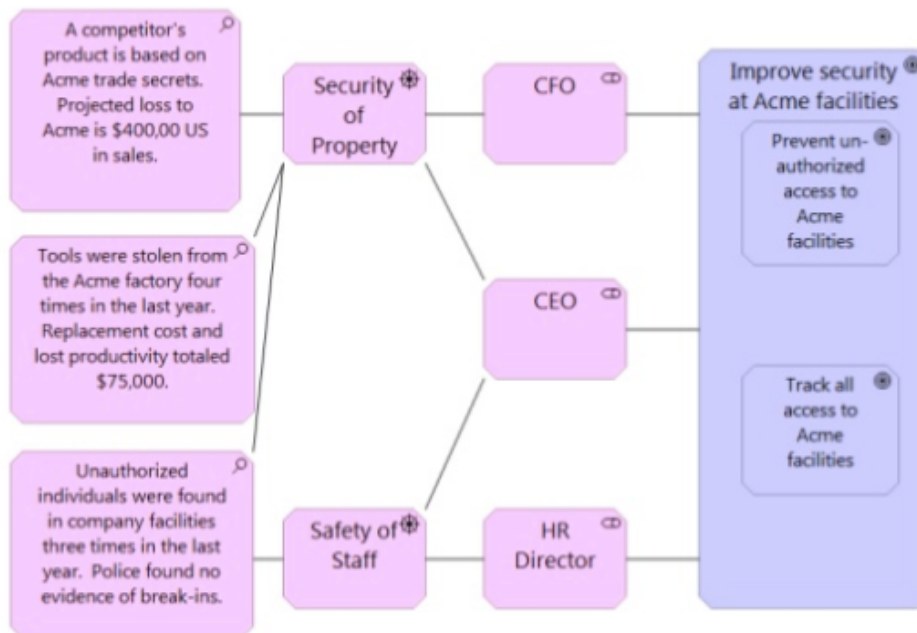


## Case Study: Facility Security at the Beta Corporation

Beta Corporation is a small manufacturer and distributor of tools for industrial markets. Recent incidents have left Acme executives concerned about the physical security of their headquarters, factory and warehouse

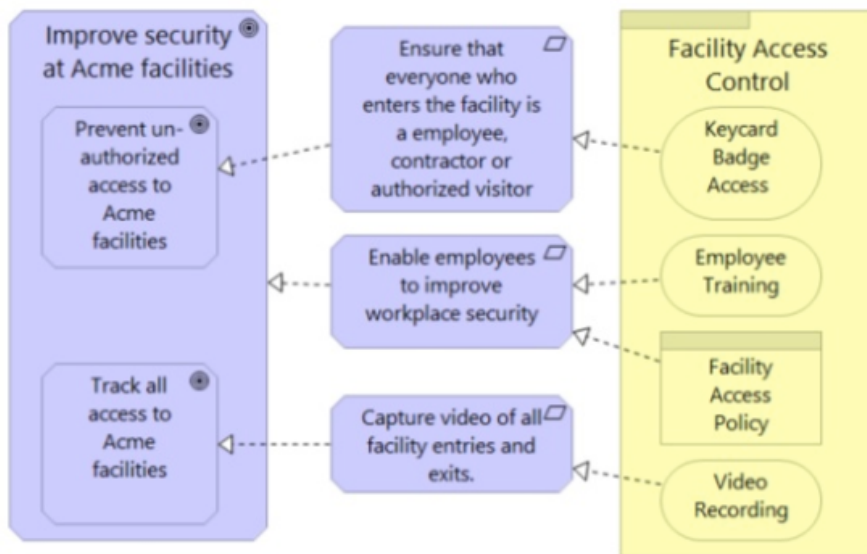
### Stakeholder View Exercise

- ✓ A competitor's product is based on Acme trade secrets. Projected loss to Acme is \$400,000 US in sales.
- ✓ Tools were stolen from the Acme factory four times in the last year. Replacement cost and lost productivity totaled \$75,000.
- ✓ Unauthorized individuals were found in company facilities three times in the last year. Police found no evidence of break-ins.
- ✓ The CFO is therefore concerned about security of company property
- ✓ The HR Director is therefore concerned about safety of company staff
- ✓ The CEO shares both concerns
- ✓ All three leaders share a two-part goal to improve security at Acme facilities – Prevent unauthorized access to Acme facilities – Track all access to Acme facilities



### Requirements Realization View Exercise

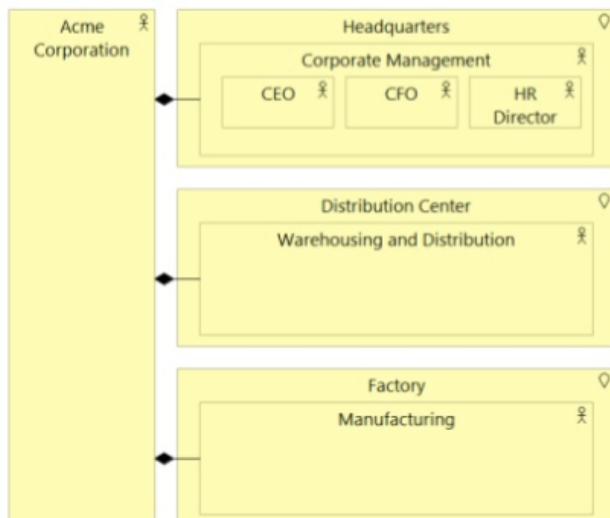
- ✓ The following requirements will improve security at Acme facilities
  - Ensure that everyone who enters the facility is a employee, contractor or authorized visitor
  - Enable employees to improve workplace security through daily practices
  - Capture video of all facility entries and exits
- ✓ The requirements will be realized by components of a Facility Access Control product with
  - Keycard Badge Access
  - Employee Training
  - Video Recording
  - Facility Access Policy



### Organization View Exercise

Acme Corporation has three locations, each of which houses a key internal organization

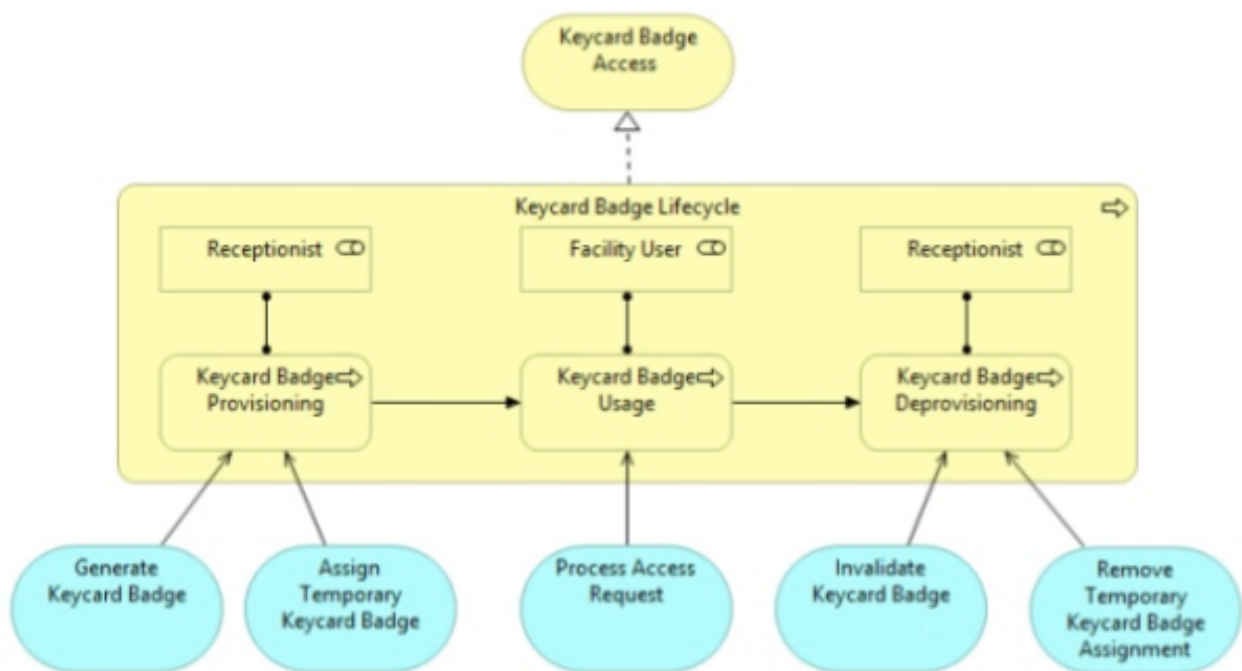
- The Headquarters houses Corporate Management, which includes the CEO, CFO and HR Director.
- The Distribution Center houses the Warehousing and Distribution organization
- The Factory houses the Manufacturing Organization



### Business Process View Exercise

The Keycard Badge Lifecycle business process:

- Realizes the Keycard Badge Access business service
- Is composed of three successive sub-processes, each of which is performed by a specific role, and uses specific application services
  - Keycard Badge Provisioning: Performed by Receptionist and Uses Generate Key Badge and Assign Temporary Key Badge
  - Keycard Badge Usage: Performed by Facility User and Uses Process Access Request
  - Keycard Badge Deprovisioning: Performed by Receptionist and Uses Invalidate Keycard Badge and Remove Temporary Keycard Badge Assignment



### SOURCE

<https://www.slideshare.net/iverband/an-introduction-to-enterprise-architecture-visual-modeling-with-the-archimate-21-language-51680779>