

Enterprise and Business Process Modelling Exam

Write down your answers only on the sheets provided and answer the questions in the spaces provided.
Time Available 120 minutes.

Student Name: _____

1. Questions about Enterprise Architecture.

Total for Question 1: 9

- (a) (2 points) Define the concept of enterprise architecture description.

- (b) (2 points) What are the different perspectives of the Archimate framework?

- (c) (5 points) Provide the Archimate model related to the following statement.

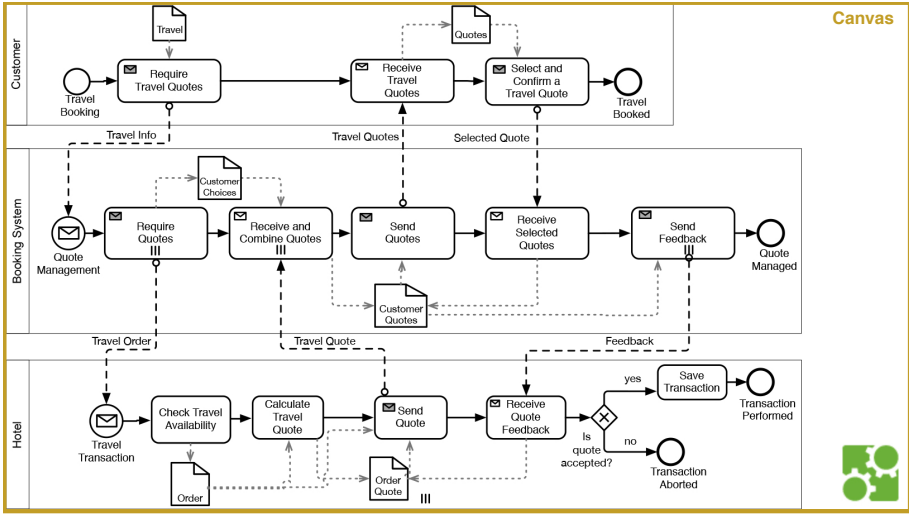
“A Web Archive artifact (which may realize an application component) is composed of two other artifacts: Database Access Java Archive and Business Logic Java Archive. Two specializations of the Web Archive artifact are a Purchase Application Web Archive and a Quotation Application Web Archive. A Travel Insurance Database artifact (which may realize a data object) is associated with the Web Archive artifact. ”

2. Questions about Business Process Modelling.

Total for Question 2: 17

(a) (2 points) Define the concept of Business Process?

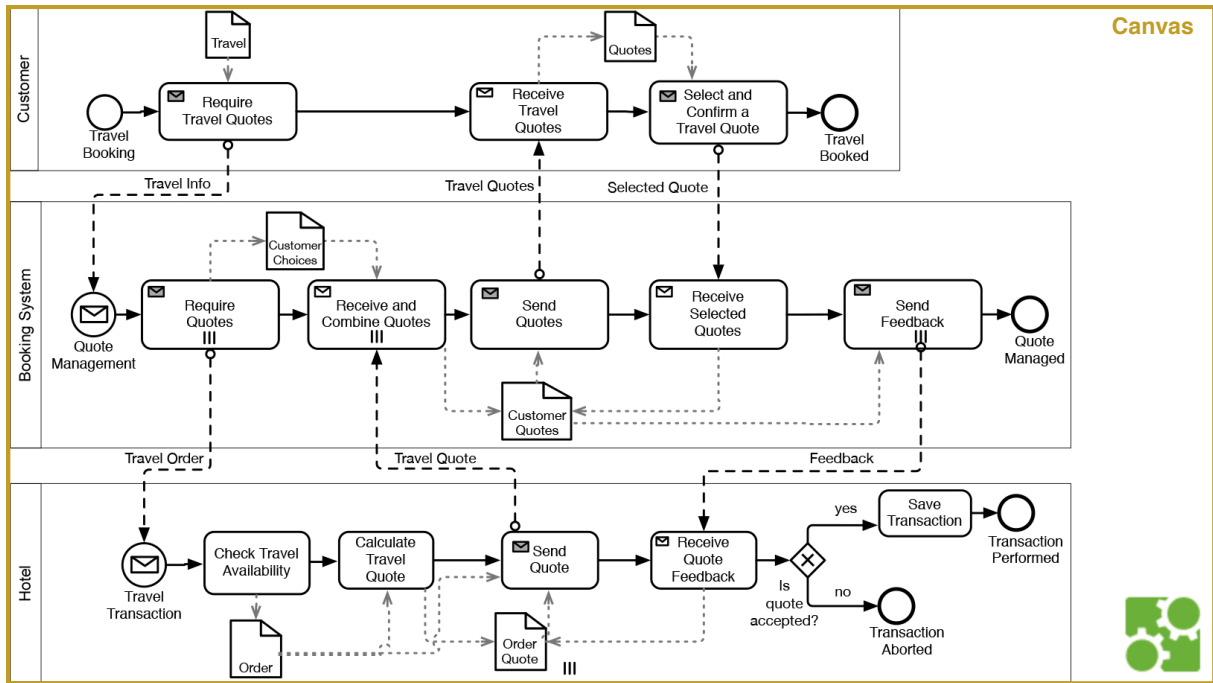
(b) (5 points) Considering the following BPMN model please transform it in a Petri Net.



(c) (5 points) Provide the BPMN model related to the following text.

“The workflow of a computer repair service (CRS) can be described as follows. A customer brings in a defective computer and the CRS checks the defect and hands out a repair cost calculation back. If the customer decides that the costs are acceptable, the process continues, otherwise she takes her computer home unrepaired. The ongoing repair consists of two activities, which are executed, in an arbitrary order. The first activity is to check and repair the hardware, whereas the second activity checks and configures the software. After each of these activities, the proper system functionality is tested. If an error is detected another arbitrary repair activity is executed, otherwise the repair is finished.”

(d) (5 points) Considering the following BPMN model please transform it in a Choreography model.



3. Questions about Model Quality.

Total for Question 3: 7

(a) (2 points) What are the possible quality checks that can be done in a process model?

(b) (2 points) What are the different properties of soundness? Provide examples.

(c) (3 points) Provide the eCRG model related to the following statement.

“If a student is enrolled, it must have been received and confirmation mail before. Furthermore, the student have to pay tax afterwards. Conversely, for a rejection no confirmation is possible any longer. ”